

# NOTE

Before installation, carefully inspect the panels for any material defects, especially defects on the decorative surface, mechanical damage to the locks, as well as discrepancies in color or gloss. Variations and diversity in structures, wood rings and knots, the presence of bleached wood rings or cracks are elements of design and are not considered product defects. Installation of the panels is regarded as acceptance of the product, and no damages and/or color discrepancies, as well as the above-mentioned design variations, can serve as grounds for any subsequent claims regarding the product.

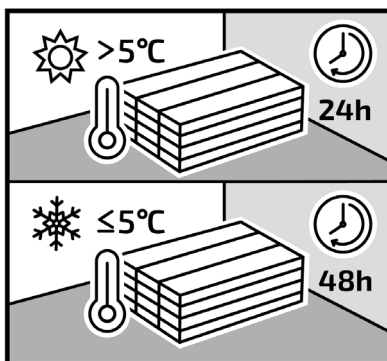
Before laying, it is recommended to sort the panels according to design and shades, and then install them alternately to achieve a satisfactory and even transition from one pattern to another in the room. For the best visual effect, panels should always be laid in the direction of the main light source.

## PREPARATION:

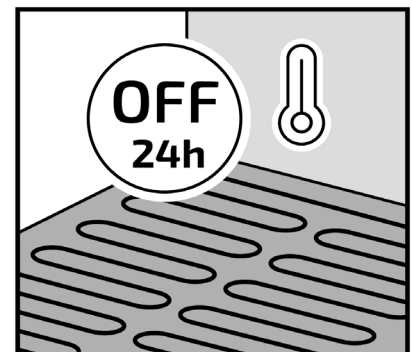
**Temperature: 18–30°C**

**Humidity: 40–65%**

1. If the transportation temperature is above 5°C, the acclimatization period in the room with a temperature of 18–30°C (where installation will take place) must be 24 hours.



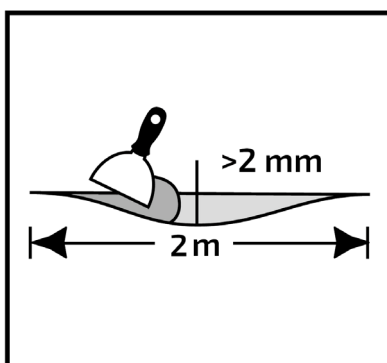
If the transportation temperature is  $\leq 5^{\circ}\text{C}$ , the acclimatization period in the room with a temperature of 18–30°C must be 48 hours.



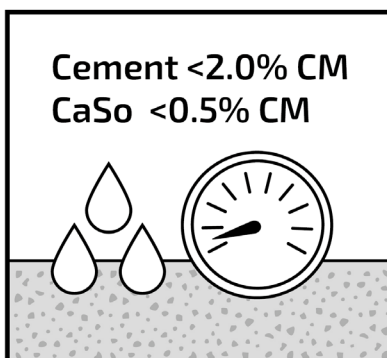
2. Turn off underfloor heating 24 hours before installation.

3. The type of subfloor, its quality and preparation, especially the

elimination of any unevenness, have a decisive impact on the final result. The panels are suitable for installation on cement and anhydrite subfloors, as well as self-leveling bases. Do not install the panels directly on carpets or other soft floor coverings.



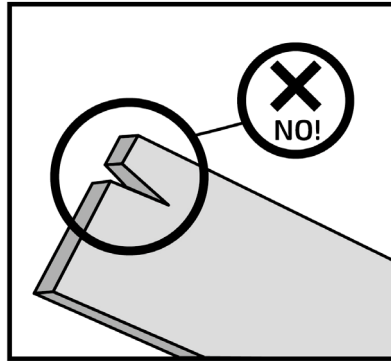
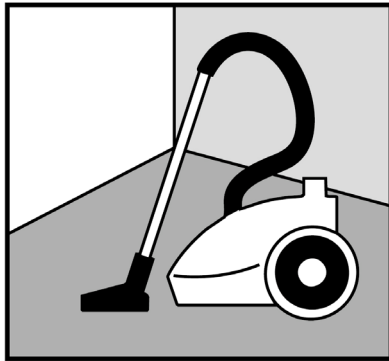
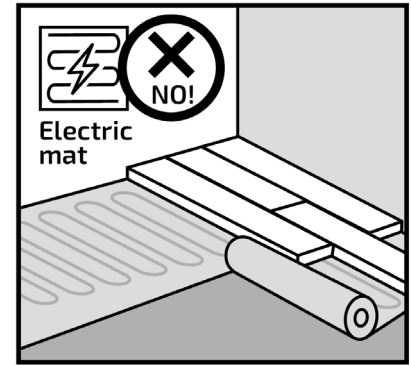
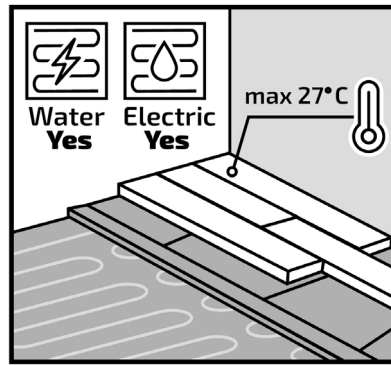
4. Make sure the subfloor is completely level. All local unevenness of the subfloor exceeding 1 mm, or exceeding 2 mm over a length of more than 2 m, must be leveled. To prepare an ideal subfloor, apply a cement screed or a self-leveling compound over the entire surface.



5. For a cement subfloor, the moisture content must be below 2.0%, and for an anhydrite subfloor – below 0.5%. When installing with an underfloor heating system, the above values must be 1.8% and 0.3%, respectively.

6. Panels may be installed on a heated subfloor provided that the maximum surface temperature is maintained at 27°C. The underfloor heating must be switched off one day prior to

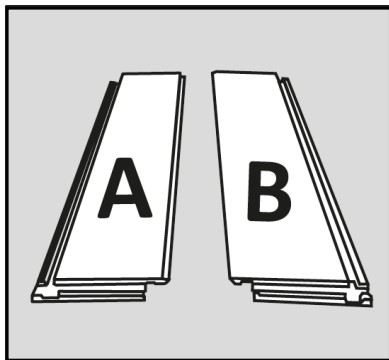
installation, and after laying the panels, wait another day before gradually switching it back on (increasing the temperature by 5°C per day). Installation is permitted over water-based heating systems or electric underfloor heating embedded in the subfloor, provided that the above-mentioned temperature ranges are ensured. Installation directly on electric heating mats is not recommended.



Make sure the subfloor is dry, level, stable, and free from grease or chemicals. Any protruding unevenness must be removed or sanded down. Before installation, thoroughly sweep and vacuum the subfloor to remove all debris. Any serious defects and large cracks in the subfloor must be repaired.

Before and during installation, inspect the panels under optimal lighting conditions. Do not use defective panels.

### PANEL INSTALLATION:

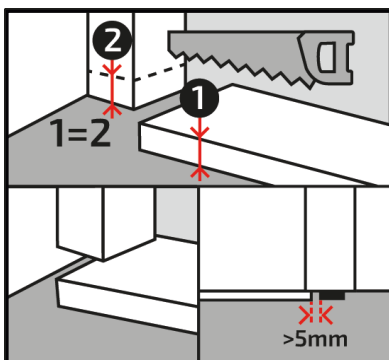


**Temperature: 18–30°C**

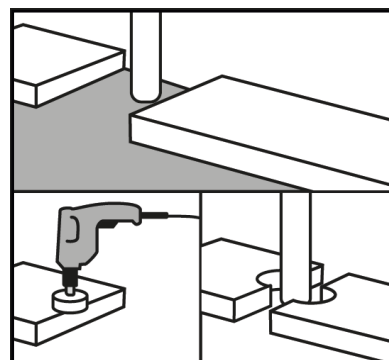
**Humidity: 40–65%**

**Subfloor minimum temperature: 15°C**

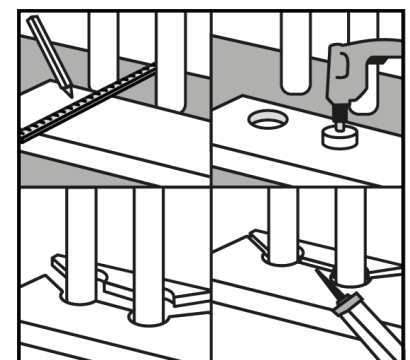
Each package contains two types of panels: A and B. Panels A and B must be sorted separately before installation. During installation, it is very important to ensure that panels A and B are placed in their corresponding positions within the row.



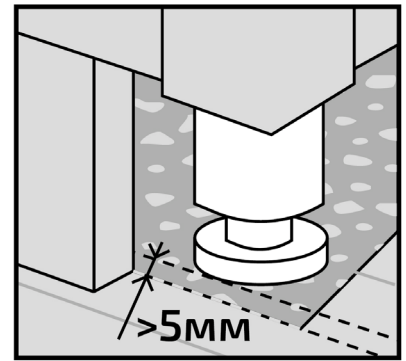
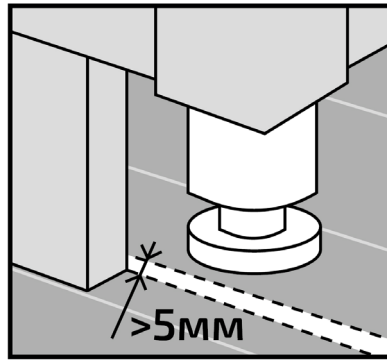
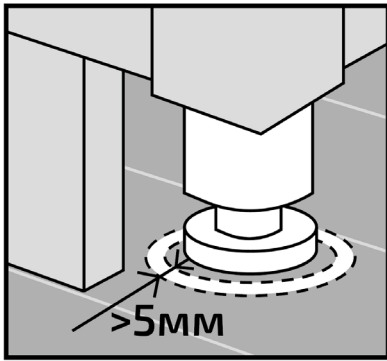
Near doorways, it is recommended to trim the door frame profiles and leave a clearance above the installed panel so as not to restrict its possible movement.



In the case of vertical pipes embedded in the subfloor, leave a clearance around the pipes. The holes for the pipes should be drilled with a bit 5 mm larger in diameter than the pipe.



Proceed similarly in the case of multiple heating system pipes. The cut-out panel pieces must be joined using installation adhesive suitable for plastic components.



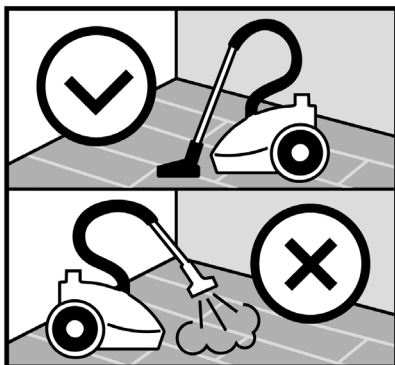
When placing heavy objects on the floor (such as kitchen furniture, kitchen islands, built-in cabinets, or other wall-fixed furniture), a 5 mm expansion gap must be left between them and the panels. We recommend the following methods for maintaining expansion gaps:

- 6a. Cut openings in the floor for furniture legs with a 5 mm gap on each side to preserve the expansion space.
- 6b. Saw the floor along the furniture and leave a 5 mm expansion gap.
- 6c. Finish laying the floor at the required distance (5 mm on each side) from the heavy object.

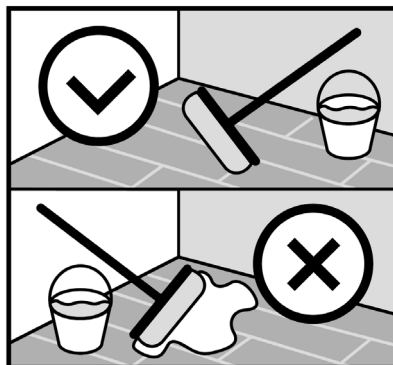
**USE AND MAINTENANCE:**

**Temperature: 18–30°C**

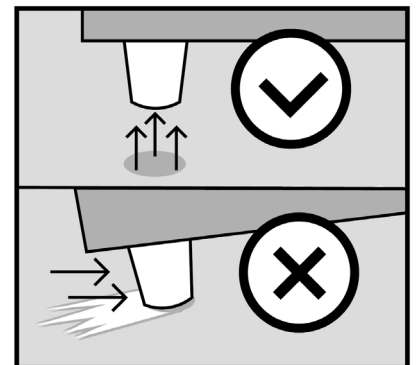
**Humidity: 40–65%**



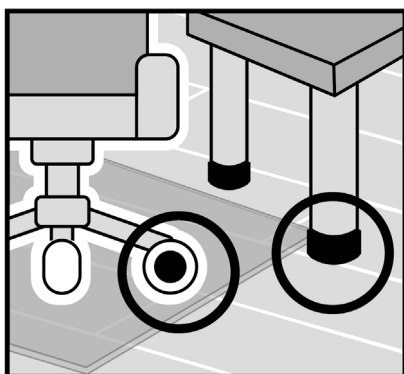
The floor can be cleaned with a vacuum cleaner; however, the use of steam cleaning devices is prohibited.



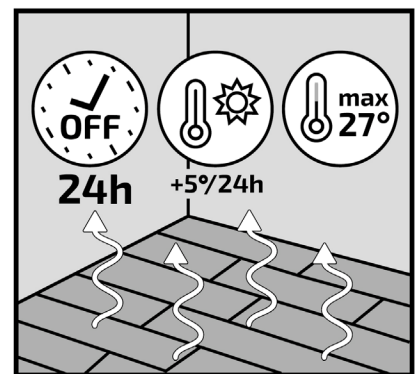
The floor can be cleaned with a damp mop.



Heavy objects must not be dragged across the floor. They may only be moved while lifted off the floor.



Use office chairs with W-type casters, which provide additional floor protection through a protective grid. Furniture legs should be fitted with pads, such as felt, to protect the floor from scratches.



After installing the floor, wait 24 hours before turning on the underfloor heating, gradually increasing the temperature by 5°C per day.

**WARNING!** Please note that the maximum floor surface temperature must not exceed 27°C.